



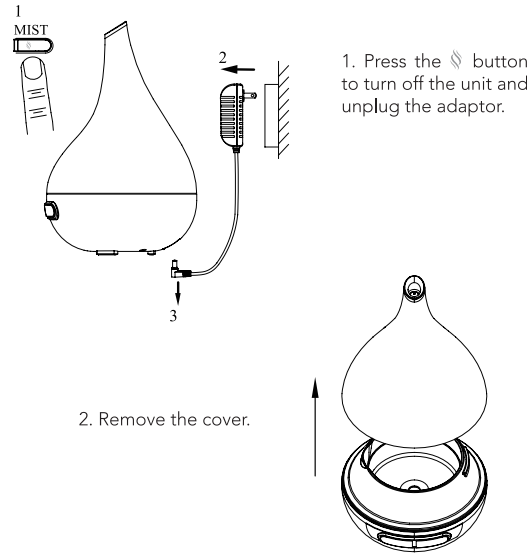
Congratulations

on your purchase of the QUOOZ Lull
Ultrasonic Aroma Diffuser.

Please keep this manual for further
reference and maintenance.


www.quooz.com
email: support@quooz.com

MAINTENANCE



WARNING:
DO NOT EMPTY WATER
FROM THE VENT HOLE.

3. Empty water via the water
discharge groove.

4. Use a clean swab or cloth
to clean the unit.

TROUBLESHOOTING

Symptom	Possible Cause	Solution
No Mist	Power supply is not connected	Plug in the adaptor and press the button
	Insufficient water	Refill the water tank
	There's too much water that it even exceeds the Max. Water Level Line	Pour out the extra water through the water discharge groove
	The mist outlet is blocked	Clean the opening and keep it ventilated
	Oil buildup on the bottom of the water tank	Use a clean swab or cloth to clean the unit

WARNING

In case of abnormal situations such as smoke, peculiar smells and cacophony, any further use may result in an accident such as fire or electric shock. You should unplug the adaptor immediately and contact your local dealer.

Never wrap the adaptor with cloth or paper, or it could not dissipate the heat properly which may cause it to melt or cause a fire.


Never attempt to disassemble or repair the product. In case of internal inspection or repair needed, please contact your local dealer.

Please keep the product out of the reach of children to avoid any injury or electric shock.

This appliance is not intended for use by persons (including children) with reduced physical, sensory or mental capabilities, or lack of experience and knowledge, unless they have been given supervision or instruction concerning use of the appliance by a person responsible for their safety.

If the supply cord is damaged, it must be replaced by the manufacturer, its service agent or similarly qualified persons in order to avoid a hazard.

IMPORTANT!

 In accordance to WEEE Directive (Waste from Electrical and Electronic Equipment Directive) 2002/96/EC this equipment should not be disposed of in the normal waste stream. Corrosive oils such as Citronella may cause damage to the unit if left in the reservoir after use. This type of damage is not covered under the warranty. Please clean the unit after each use.

M A N U A L


Lull



AROMA
DIFFUSER



Spread the Joy!

Life's stresses can stretch you thin and even breathing may sometimes seem like a luxury. Quooz upgrades your quality of life by bringing you the benefits of aromatherapy into the comfort of your home providing a true retreat for the mind, body, and soul.

Using ultrasonic waves to diffuse tap water with your choice of essential or fragrant oils, Lull by Quooz transforms your home or environment into a personal haven. The Lull does not use or generate heat, thereby ensuring that none of the oil properties are damaged or compromised.

Good for you, good for the atmosphere! The LED energy- saving light can be adjusted to desired brightness, and it can also be turned off. The "breathing" mode soothes by lighting up and fading gradually. With the ultra high capacity, the unit can work all night, and then, for optimal safety, the unit will turn off automatically when the water runs low. Want it to work longer? The intermittent mist function allows you to adjust the diffusion amounts enabling the unit to work eighteen hours at a time!

The attractive and chic design makes Lull by Quooz a delightful gift or addition to your home or office. It spreads more than a pleasant aroma; it spreads health, color, ambiance and good cheer all around by purifying, ionizing, and cleansing the air. Using cutting-edge technology, it creates more negative ions to relax and rejuvenate the soul. **So stimulate those senses.**

SPECIFICATIONS

Specification

Item Name: Lull

Product Size: 152mm × 237mm

Voltage: DC 24V

Power: 12W

Water Capacity: 200ml

01. Cover

02. Max. Water Level Line

03. Vent Hole

04. Water Tank

05. Mist Outlet

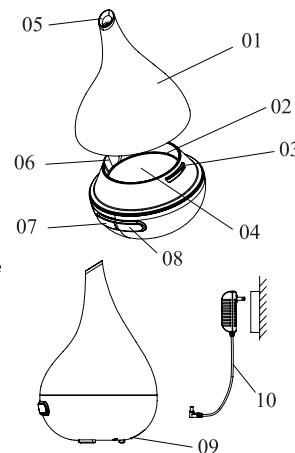
06. Water Discharge Groove

07. Light Button

08. Mist Button

09. DC Jack

10. Adaptor *

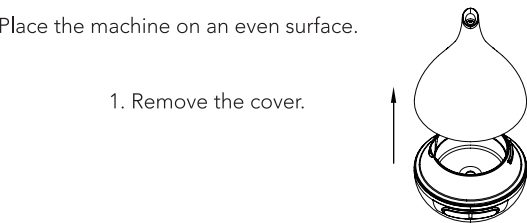


***Packaged in a small white box inside the colored diffuser cover.**

OPERATING INSTRUCTIONS

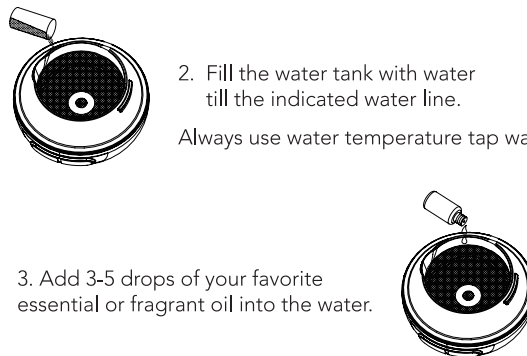
Place the machine on an even surface.

1. Remove the cover.



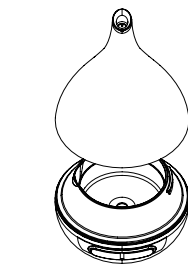
2. Fill the water tank with water till the indicated water line.

Always use water temperature tap water.

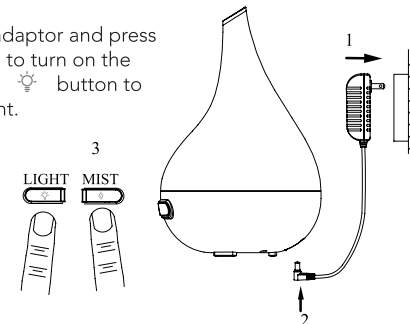


3. Add 3-5 drops of your favorite essential or fragrant oil into the water.

4. Replace the cover.



5. Plug in the adaptor and press the button to turn on the mist. Press the button to turn on the light.



CONTROL BUTTONS:

1. Mist Control:

Press  once to turn on continuous misting.

Press the button again for interval misting- 20 Secs on /40 Secs off- per minute round. Great for stronger oils or for extended diffusing time.

Press the mist button again for misting OFF

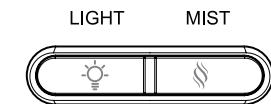
2. Light Control:

– Press  once for "Breathing" mode- The light will start intensifying gradually and fading down.

– Press the button again to set a steady light when the light is at your preferred brightness.

– Press the light button again to turn the LED light OFF entirely.

This product will shut off automatically when the minimal water level is reached.



Note: Do not move or attempt to empty or refill during operation.

If the unit is knocked over during operation, liquid may flow into the internal space of the machine. Unplug the power and empty all the water. Then, let the machine stand in a well ventilated place for at least 3 days.

